

iCON

G-BOARD

USB MIDI foot switch pedal controller







User manual



EN16549



	CAUTION RISK OF ELECTRIC SHOCK DO NOT OPEN RISQUE DE CHOC ELECTRIQUE NE PAS OUVRIR		
CAUTION: TO REDUCE THE RISK OF ELECTRIC SHOCK DO NOT REMOVE COVER (OR BACK) NO USER-SERVICEABLE PARTS INSIDE REFER SERVICING TO QUALIFIED PERSONNEL			
ATTENTION: POUR EVITER LES RISQUES DE CHOC ELECTRIQUE, NE PAS ENLEVER LE COUVERCLE, AUCUN ENTRETIEN DE PIECES INTERIEURES N'EST AUCUN L'ENTRETIEN AU PERSONNEL QUALIFIE. AVIS: POUR EVITER LES RISQUES D'INCENDIE OU D'ELECTROCUTION, NE EXPOSEZ PAS CET ARTICLE A LA PLUIE OU A L'HUMIDITE			

The lightning flash with arrowhead symbol within an equilateral triangle is intended to alert the user to the presence of uninsulated dangerous voltage within the product's enclosure, that may be of sufficient magnitude to electric shock to persons. Le symbol clair avec point de flèche à l'intérieur d'un triangle équilatéral est utilisé pour alerter l'utilisateur de la présence à l'intérieur du coffret de voltage dangereux non isolé d'ampleur suffisante.

Exclamation point within an equilateral triangle is intended to alert the user of the presence of important operating and maintenance (servicing) instructions in the literature accompanying the appliance. Le point d'exclamation à l'intérieur d'un triangle équilatéral est employé pour alerter les utilisateurs de la présence d'instructions importantes pour le fonctionnement et l'entretien (service) dans le livret d'instruction accompagnant l'appareil.

Important Safety Instructions

1. Read these instructions.
2. Keep these instructions.
3. Heed all warnings.
4. Follow all instructions.
5. Do not use this apparatus near water.
6. Clean only with dry cloth.
7. Do not block any ventilation openings. Install in accordance with the manufacturer's instructions.
8. Do not install near any heat sources such as radiators, heat registers, stoves, or other apparatus (including amplifiers) that produce heat.
9. Only use attachments/accessories specified by the manufacturer.

Contents

Introduction	
What's in the package.....	1
Features	2
Front Panel Layout	2
Side Panel Layout	3
Getting Started	
Connecting your G-Board controller	3-4
Installing iMap™ Software for Mac OSX	4
Installing iMap™ Software for Windows	5-6
Assigning MIDI functions with iMap™	7
iMap™ G-Board software panel	7-8
Firmware upgrade	9
Restore the factory default settings	10
Daisy chain your G-Board to other i-series controllers	10
Specifications	11
Services	12

Introduction

Thank you for purchasing the ICON G-Board USB MIDI controller. We sincerely trust this product will provide years of satisfactory service, but if anything is not to your complete satisfaction, we will endeavor to make things right.

In these pages, you'll find a detailed description of the features of the G-Board, as well as a guided tour through its front and side panels, step-by-step instructions for its setup and use, and full specifications.

You'll also find a warranty card enclosed---please don't forget to fill it out and mail it so that you can receive online technical support at: www.icon-global.com. And so we can send you updated information about these and other ICON products in the future. As with most electronic devices, we strongly recommend you retain the original packaging. In the unlikely event the product must be returned for servicing, the original packaging (or reasonable equivalent) is required.

With proper care and adequate air circulation, your G-Board will operate without any trouble for many years. We recommend that you record your serial number in the space provided below for future reference.

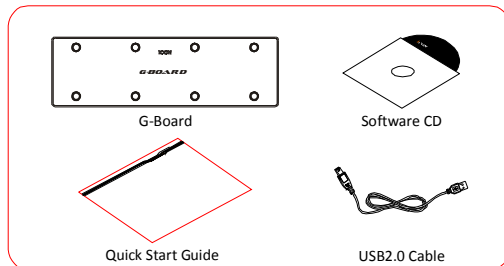
Please write your serial number here for future reference:

Purchased at:

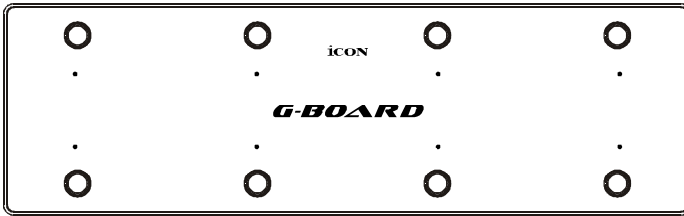
Date of purchase:

What's in the package?

- G-Board USB MIDI controller x 1
- Software CD x 1
- Quick Start Guide
- USB2.0 Cable



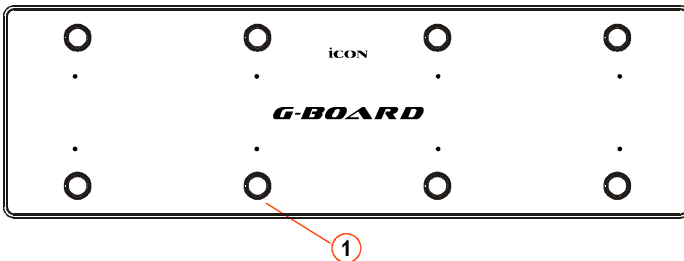
Features



G-BOARD

- 8 robust metal click type foot switches
- Ideal for guitarists
- Extremely compact and perfectly match with MacBook™
- Class-compliant with Windows XP, Vista (32 bit / 64 bit), and Mac OS X
- USB bus-powered
- 2xUSB Connectors for daisy chain with other i-series controller
- Available in Black and White
- Difference colors aluminum cover is available (optional)
- Custom laser-engraving service for aluminum cover is available at on-line purchase (optional)

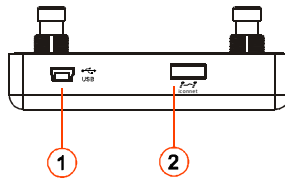
Front Panel Layout



① 8 foot switches

Assignable foot switches to control different functions of a DAW or other application. The foot switches may be assigned using a midi function or with the iMap software provided.

Side Panel Layout



- ① **USB port (B-Type)**
Functions as a MIDI port to your notebook (or computer) and compatible software. Also provides power to your G-Board.
- ② **USB port**
Use to daisy chain with the second unit of G-Board or any i-series controllers such as iPad

Note: For recommendations on the combination and daisy chain sequence of different i-series controllers, please visit the ICON website at the following link: www.icon-global.com

Getting Started

Connecting your G-Board controller

- ① **Connect the G-Board to your Mac/PC via the USB port**
Choose a USB port on your Mac/PC and insert the wide (flat) end of the USB cable. Connect the cable's small jack end to the G-Board. Your Mac/PC should automatically “detect” the new hardware and notify you that it is ready to use.

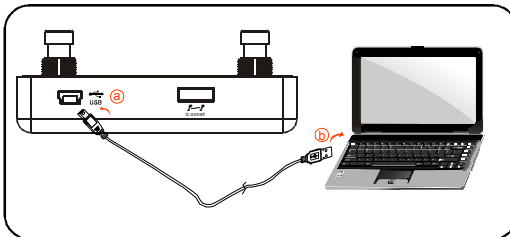


Diagram 1



Diagram 2

② **Assign the MIDI messages to G-Board**

Refer to page.7 for “Assign the MIDI messages with “iMap™” software.



Installing iMap™ Software for MAC OSX

Please follow the procedures below step-by-step to install your iMap™ software to Mac OS X

- ① **Turn on your MAC.**
- ② **Insert the Utility CD in your CD-Rom and double click “iSeries iMap” icon.**

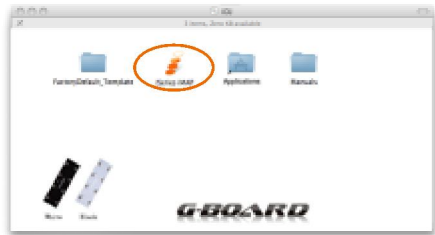


Diagram 1

- ③ **iMap “Device select” window pop-up, click the device button accordingly to launch the iMap™ software.**

Tips: By “drag and drop” the “iSeries iMap” icon into the “Applications” folder, you could create a “iMap” shortcut on your Mac's desktop.

Installing iMap™ Software for Windows

Please follow the procedures below step-by-step to install your iMap™ software.

- ① **Turn on your PC.**
- ② **Insert the Utility CD in your CD-Rom**
 After you have inserted the CD into your CD-Rom, an installation screen should appear as shown in diagram 1; click "iMap™ installation".
(Note: If the installation screen not appear automatically go to the CD folder and double click on "Setup")



Diagram 1

- ③ **Setup Wizard appear**
 Setup wizard appears, please click "Next"



Diagram 2

- ④ **Choose Install Location**
 Choose your preferred install location for iMap™ or use the default location and click "Next"

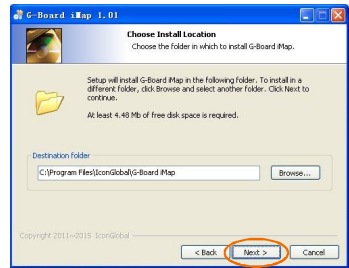


Diagram 3

- ⑤ **Create a shortcut on your desktop**
 Please untick the box if you do not want to place a shortcut icon on your desktop for iMap™, otherwise click "Next"



Diagram 4

Installing iMap™ Software for Windows(continues)

⑥ **iMap™ started to install**

The iMap™ installation has now started, wait for it to finish. Then click "Finish"

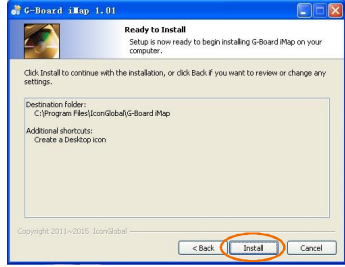


Diagram 5

⑦ **Installation finished**

Click "Finish" to complete the iMap™ software installation.



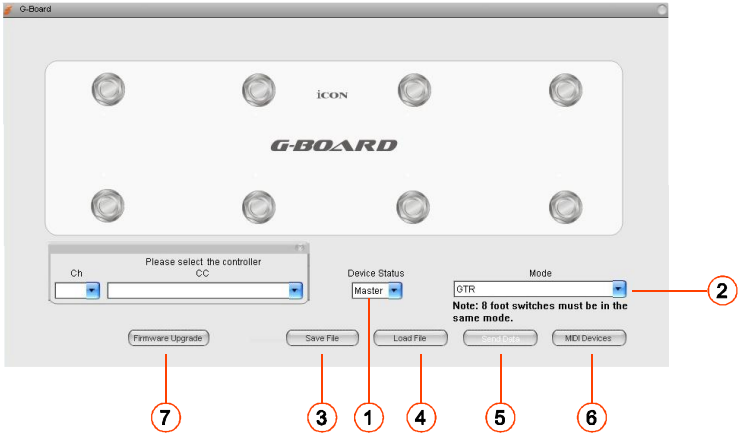
Diagram 6

Assigning MIDI functions with iMap™

You can use iMap™ to easily assign the MIDI functions of your G-Board.

G-BOARD

iMap™ G-Board software panel



- ① **Master/Slave selector**
Select “Master” if you use it as a standalone device and select “Slave” if you are cascading it as a slave unit with another ICON i-series controller.

- ② **Mode**
Mackie Control & Preset

GTR	Select your preferred mode.
Abelton Live	
Logic (Mackie Control)	
Samplitude/Cube (Mackie Control)	

User define

Select the preferred MIDI message type from the Note value, CC number or Program change for assigning the foot switches.

CC Number	Assign the MIDI channel and CC number to the foot switches.
Note Value	Assign the MIDI channel and Note value to the foot switches.
Program Change	Assign the MIDI channel and program number to the foot switches.

iMap™ G-Board software panel(continues)

③ **“Save file” button**

Click this button to save your current settings for the G-Board. The file is an “.G_Board” file.

④ **“Load file” button**

Click this button to load a previously saved “.G_Board” setting file for your G-Board.

⑤ **“Send Data” button**

Click this button to upload the iMap™ software settings to your G-Board via USB connection.

(Note: You must have connected your G-Board to your Mac/PC, otherwise the settings upload will not be successful.)

⑥ **“MIDI Devices” button**

Click this button, a MIDI device select window will appear as shown in diagram1. Please select “ICON G-Board” for the MIDI Out Devices.



Diagram 1

⑦ **“Firmware Upgrade” button**

Click this button to enter into the firmware upgrade window for G-Board. Please refer to P.9 for the firmware upgrade procedure.

Firmware upgrade

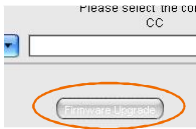


Diagram 1

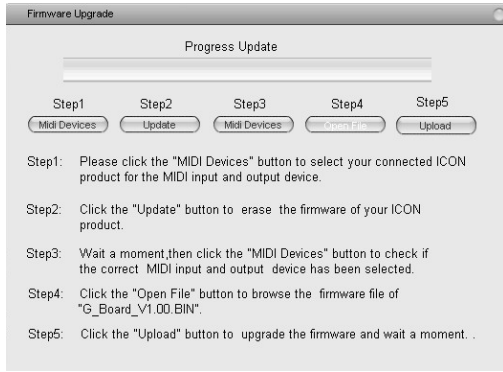


Diagram 2

Step 1: Connect the ICON product using a USB connection. Press the “MIDI Device” button at the top to select your connected ICON product as the “MIDI In and Out” device at the pull-down menu.

Note: *If your connected ICON product model name does not appear on the pull-down menu, select “USB Audio” as the MIDI In and Out device.*

Step 2: Click the “Update” button.

Step 3: Press the “MIDI Device” button at the top to select your connected ICON product as the “MIDI In and Out” device at the pull-down menu.

Step 4: Click the “Open File” button to browse the new firmware file.

Step 5: Click the “Upload” button to upload the firmware.

Warning: *The firmware upload process “MUST” be completed and not be interrupted during the file uploading, otherwise the firmware may not be rewritten again.*

Restore the factory default settings

To restore your G-Board settings to factory default, simply import the “Factory Default” setting file into your G-Board with the original setting of the iMap software.

Daisy Chain with G-Board or any i-series Controllers

You may daisy chain i-series controllers including G-Board. As i-series controller is USB bus-powered the stability depends on the total power demand of the chain. Please visit our website for recommendations on daisy chain sequence for different i-series controllers.

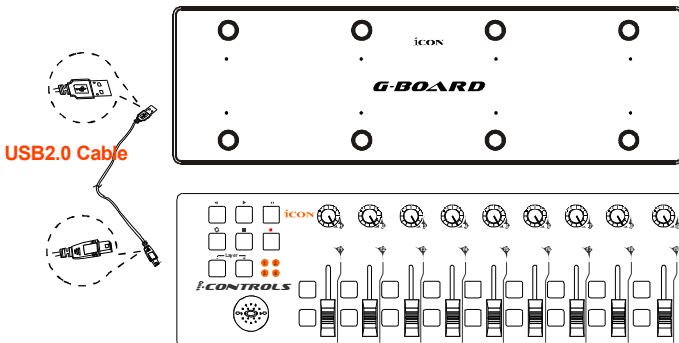
① Connect the first of the i-series controllers to your Mac/PC via the USB port

Select a USB port on your Mac/PC and insert the wide (flat) end of the USB cable and the other small end (B-type USB pack) to i-series controller.

② Connect the next of the i-series controllers

Insert the wide (flat) end of the USB cable to the first i-series controller's second USB port and the other small end (B-type USB jack) to the second i-series controller's USB port

Note: Due to the limitation of power supply via USB port, your connected devices chain might exceed the power supply limit of the USB port and cause malfunction. For recommendations on the combination and daisy chain sequence of different i-Pro series controllers, please visit the ICON website at the following link: www.icon-global.com



Specifications

Connector:	To computer	USB connector (mini B type)
Power supply:		USB bus power
Current consumption:		100mA or less
Weight:		0.77kg (1.7lb)
Dimensions:		325(L) X 99(W) X 20(H) 12.78"(L) x 3.78"(W) x 0.75"(H)

Services

If your G-Board needs servicing, follow these instructions.

1. Ensure the problem is not related to operation error or external system devices.
2. Keep this owner's manual. We don't need it to repair the unit.
3. Pack the unit in its original packaging including end card and box. This is very important. If you have lost the packaging, please make sure you have packed the unit properly. ICON is not responsible for any damage that occurs due to non-factory packing.
4. Ship to the ICON tech support center or the local return authorization.

U.S. OFFICE:

ICON Digital Corporation
8001 Terrace Ave., Suite 201
Middleton, WI, 53562 USA

ASIA OFFICE:

ICON (Asia) Corp.
Unit 807-810, 8/F., Sunley Centre,
No. 9 Wing Yin Street, Kwai Chung, NT,
Hong Kong.

5. For additional update information please visit our website at:
www.icon-global.com



iCON®

www.icon-global.com

info@icon-global.com

